

Service Bulletin
MLH52S7 No agitation / No spin - E50-E64 Error Codes



Revision 4

Date: 11/16/2022

Consumer Complaint: No agitation / No spin, and Error codes : E50, E52, E53, E54, E55, E56, E57, E58, E5A, E5B, E5C, E5D, E5E, E5F, & E64. These errors are associated with the Inverter & Motor.

Repair:

- Serial number dates Aug. 2nd 2020 and later, replace the Inverter Part # 17138100013023. Inverter covered for 1 year from install date.
- Serial number dates before Aug. 2nd 2020, replace Inverter and Motor with Kit **part #** WMDAKIT. Inverter and Motor covered for 3 years from install date. 1 time accommodation on case by case basis.

Instruction: See the serial number logic below to determine dates. Use the Methods and steps out lined in this bulletin for the part being replaced and installation of product.

2019-2020 Serial Number Logic

X X X XXXXXXXX XXXX XX X XXXX

| 12th - 15th digit is the serial # date | | |
|--|-----------------------------|------------------|
| 1st digit is year | 9 is 2019, 0-4 is 2020-2024 | |
| 2nd digit is month | 1-9 is Jan – Sep | A-C is Oct – Dec |
| Last 2 digits are the day | | |

Example below:

Serial #: 34191174302**9B22**5V00390

Production Date: 2019, Nov. 22nd

Repair: Replace Inverter and Motor with new Inverter & Motor Kit part # WMDAKIT

Midea CLOTHES WASHER

MODEL NO. MLH52S7AGS

120V~ 12A

SERIAL NO. 34191174302**9B22**5V00390

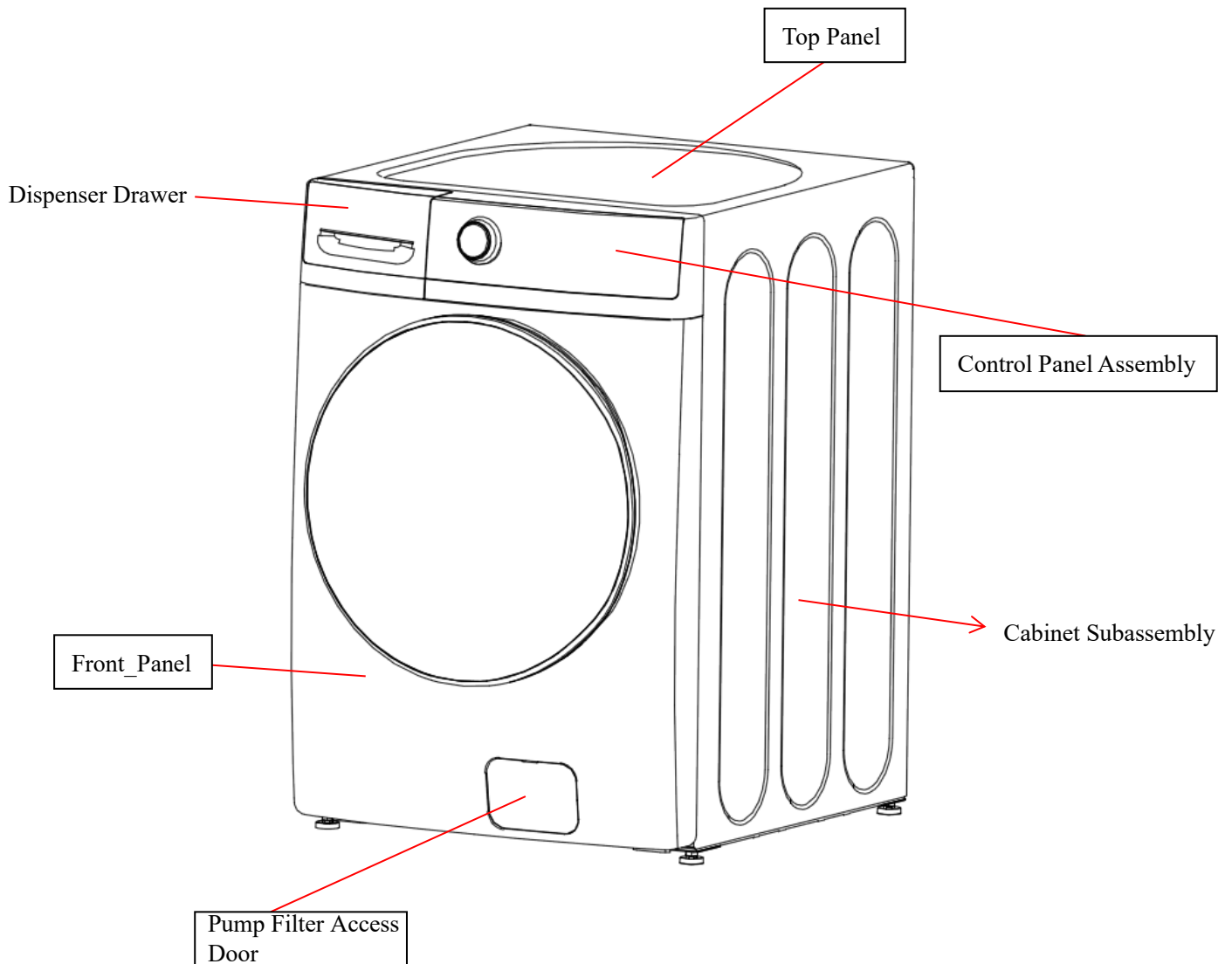
60Hz

2019.11



Energy Verified
 Rendement
 Énergétique Vérifié

MLH52S7



Note: Inverter and motor that come with WMDAKIT must be replaced together. New parts might not resemble older parts exactly.

Note: To avoid personal injury, disconnect power before servicing this product.

Inverter Replacement Method 1

Step1. Tilt machine towards the left side;

Step2. Replace the inverter;

Step1. Tilt machine towards the left side

Tilt machine to the left side and support under the rear of the base pan.

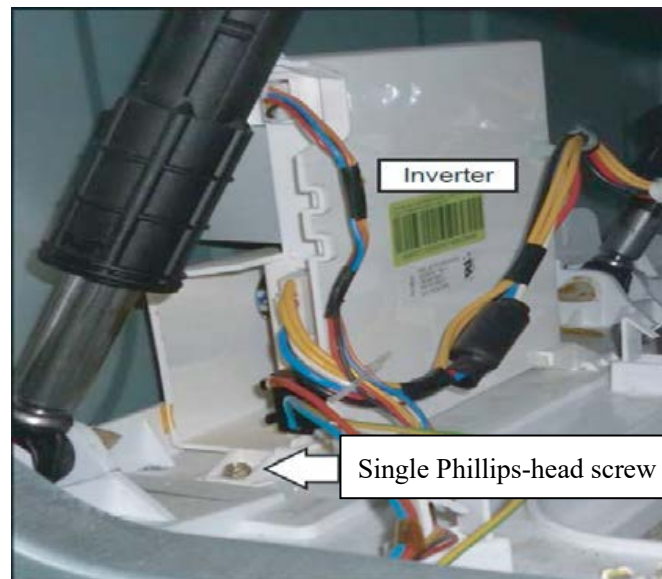


The inverter is accessible through the opening in the base pan.



Step2. Replace the inverter

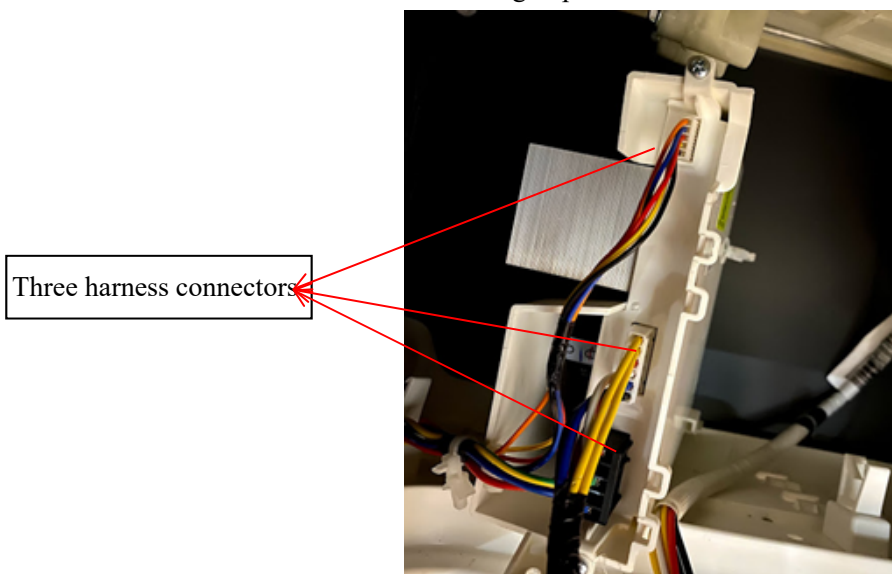
Remove the single Phillips head screw that holds the front of the inverter to the base pan.



Slide the inverter rearward to clear the guides that hold the rear of the inverter to the base pan.



Disconnect the three harnesses connectors from the inverter, and then remove the two plastic wire ties that hold the motor wiring in place.



Install new inverter. Secure the new inverter with the one Phillips head screw, and connect the three wiring harnesses connectors. Inspect the wire harnesses connectors on the inverter to ensure that they are not loose. Replace motor using motor replacement steps below. **Note:** New inverter is not compatible with old motor. The New Inverter and New Motor must be installed together.

Inverter Replacement

Method 2

- Step1. Remove the Top Panel
- Step2. Remove the Dispenser Drawer
- Step3. Remove the Control Panel Assembly
- Step4. Remove the Pump Filter Access Door
- Step5. Remove the Front Panel
- Step6. Remove and replace the Inverter

Step1. Remove the Top Panel

Remove the 3 Phillips head screws that attach the top panel, and then pull the cover rearward.



Slide the top panel rearward 1 inch then lift the panel.



Step2. Remove the Dispenser Drawer

Pull the dispenser drawer out to the stop position. Press down on the lock tab. Pull the dispenser drawer out.



Step3. Remove the Control Panel Assembly

Remove the 2 Phillips-head screws from the control panel dispenser recess.



Remove the 3 Phillips-head screws from the control panel rear cover.

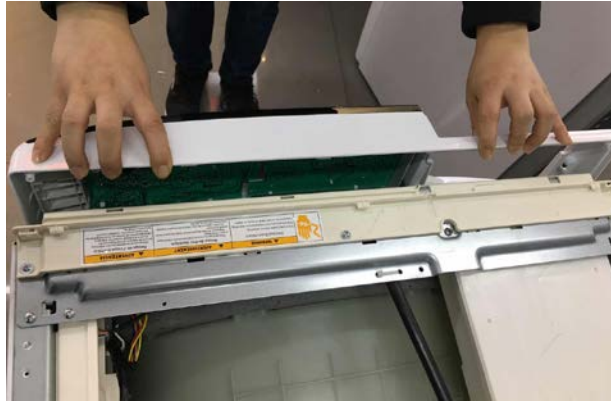


Disconnect the wire harness from the control panel.



Control panel wiring harnesses

Pull the control panel out from the front of the machine.



Step4. Remove the Pump Filter Access Door

Open the pump filter access door with a coin or flat blade screw driver.



Remove the two Phillips head screws.



Pull the left and right sides of the access door shield by hand, and remove when it is loose.



Remove the two Phillips head screws.



Step5. Remove the Front Panel

Open the door, and remove the outer gasket clamp with a flat head screwdriver.



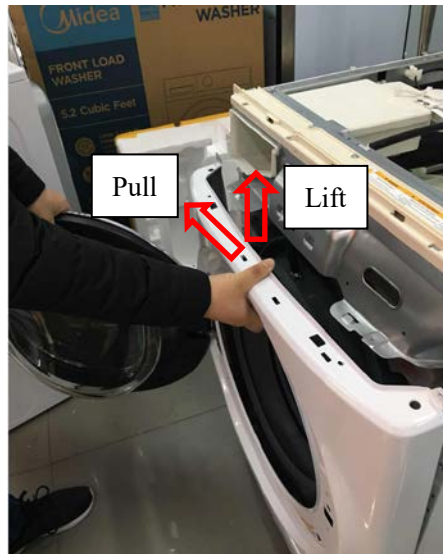
Remove the 2 Phillips head screws from the door lock.



Remove the 4 Phillips head screws that attach the front panel to the cabinet and front top bracket.



Lift and pull outward to remove the front panel.

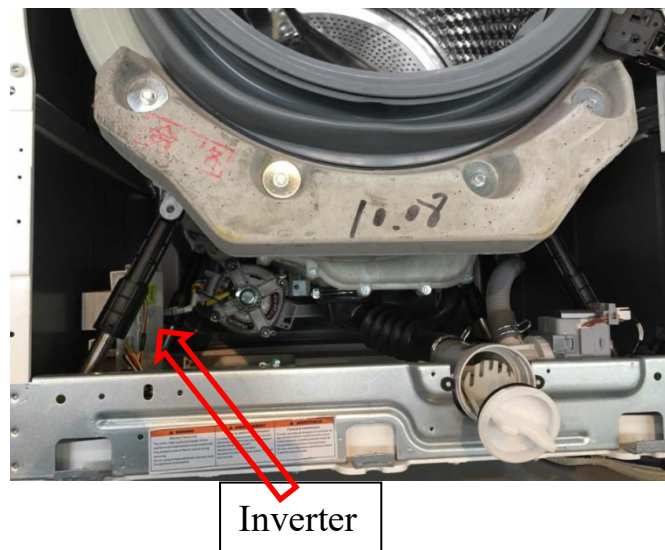


Front panel removed.



Step6. Remove and replace the Inverter

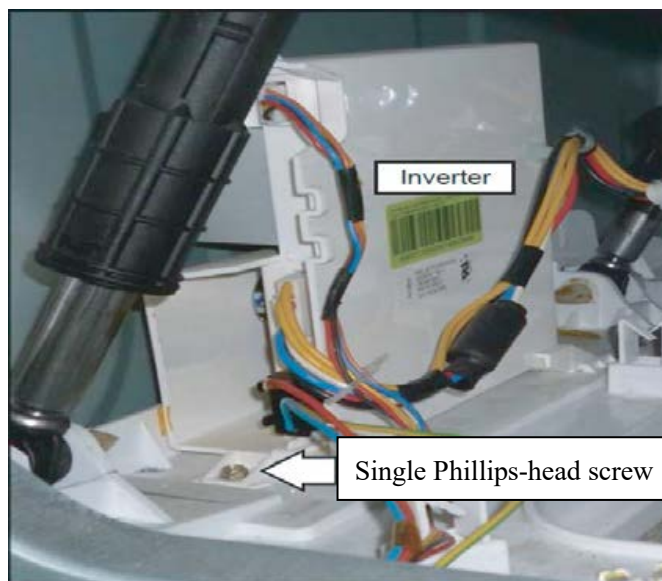
When you remove the Front panel, you can see the inverter from under the machine.



Disconnect the three harnesses connectors from the inverter, and then remove the two plastic wire ties that hold the motor wiring in place.

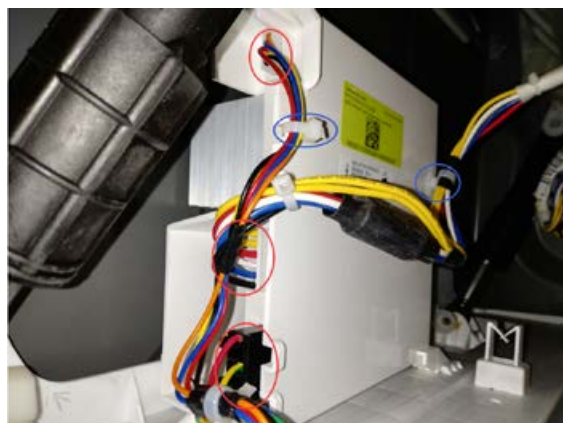


Remove the single Phillips head screw that holds the front of the inverter to the base pan.



Slide the inverter rearward to clear the guides that hold the rear of the inverter to the base pan. Remove the inverter through the enlarged opening on the left side.

Install new inverter. Secure the new inverter with the one Phillips head screw, and connect the three wiring harnesses connectors. Inspect the wire harnesses connectors on the inverter to ensure that they are not loose.



Replace motor using motor replacement steps below. **Note:** New inverter is not compatible with old motor. The New Inverter and New Motor must be installed together.

Motor Replacement

Method 1

- Step1. Remove the Rear Panel
- Step2. Remove the Drive Belt
- Step3. Remove the Motor
- Step4. Replace the Motor

Step1. Remove the Rear Panel

When you remove the rear Panel, you can see the motor on the lower right side.



Step2. Remove the Drive Belt

Remove the Drive belt by pulling the belt towards yourself and rotating the Drive Pulley.

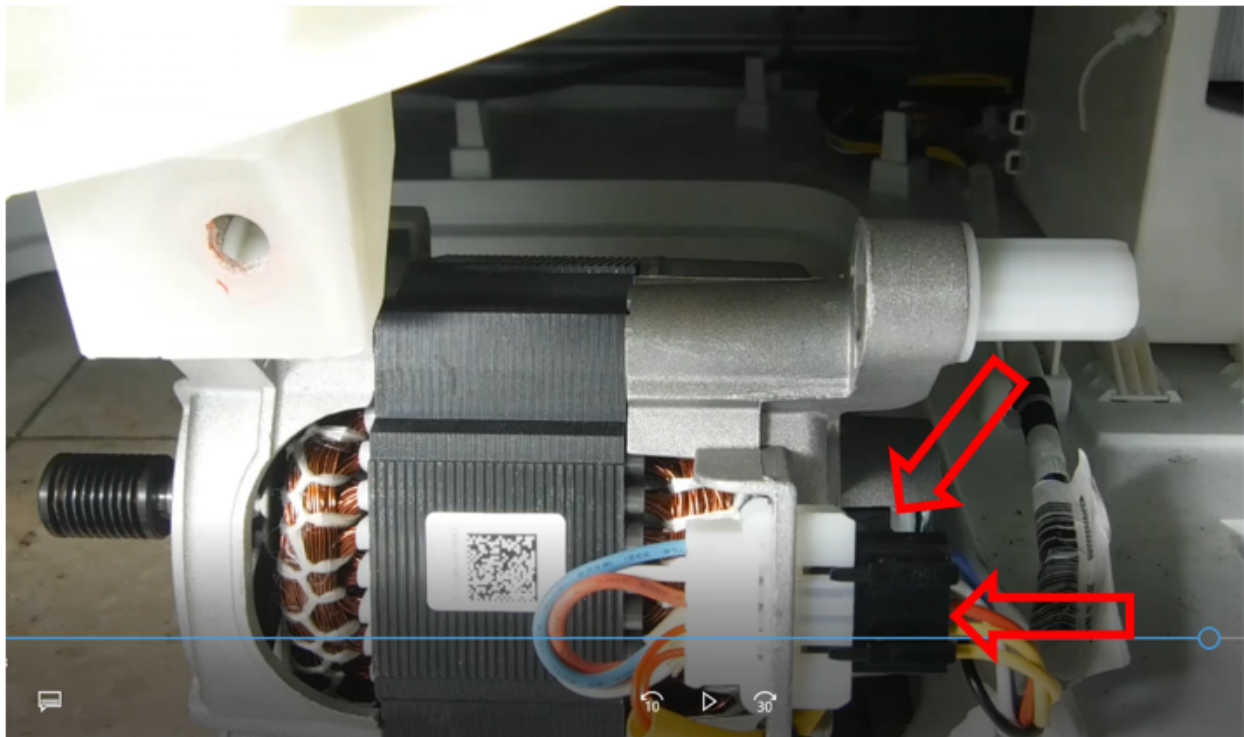


Step3. Remove the Motor

Remove the 1/2" bolt that secures the motor to the tub.



Once the Motor is loose, pull it towards yourself to slide it off the tub. Lay the Motor on the floor space inside the opening of the base of the washer.



Remove the Harness and Ground connector from the Motor.

Tilt the washer forward and slide the motor out from under the unit.



Step4. Replace The Motor

Replace the Motor, re assemble the washer, and test.

Motor Replacement Method 2 (When installed on a Pedestal)

Step1. Remove the Rear Panel

Step2. Remove the Drive Belt

Step3. Remove the Motor

Step4. Replace the Motor

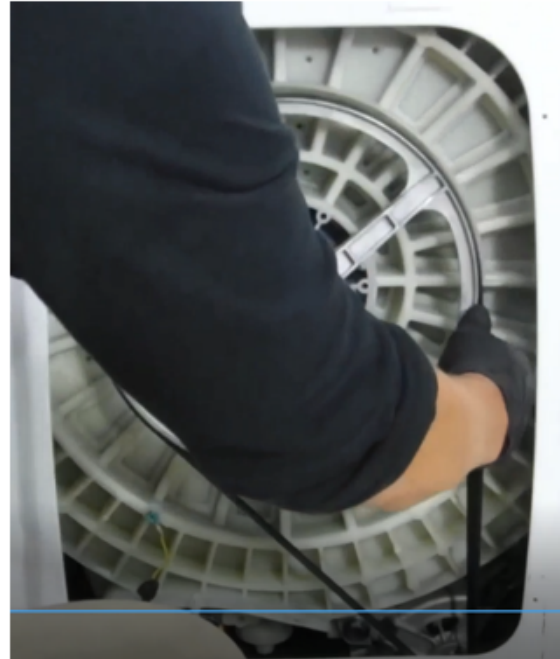
Step1. Remove the Rear Panel

When you remove the rear Panel, you can see the motor on the lower right side.



Step2. Remove the Drive Belt

Remove the Drive belt by pulling the belt towards yourself and rotating the Drive Pulley.

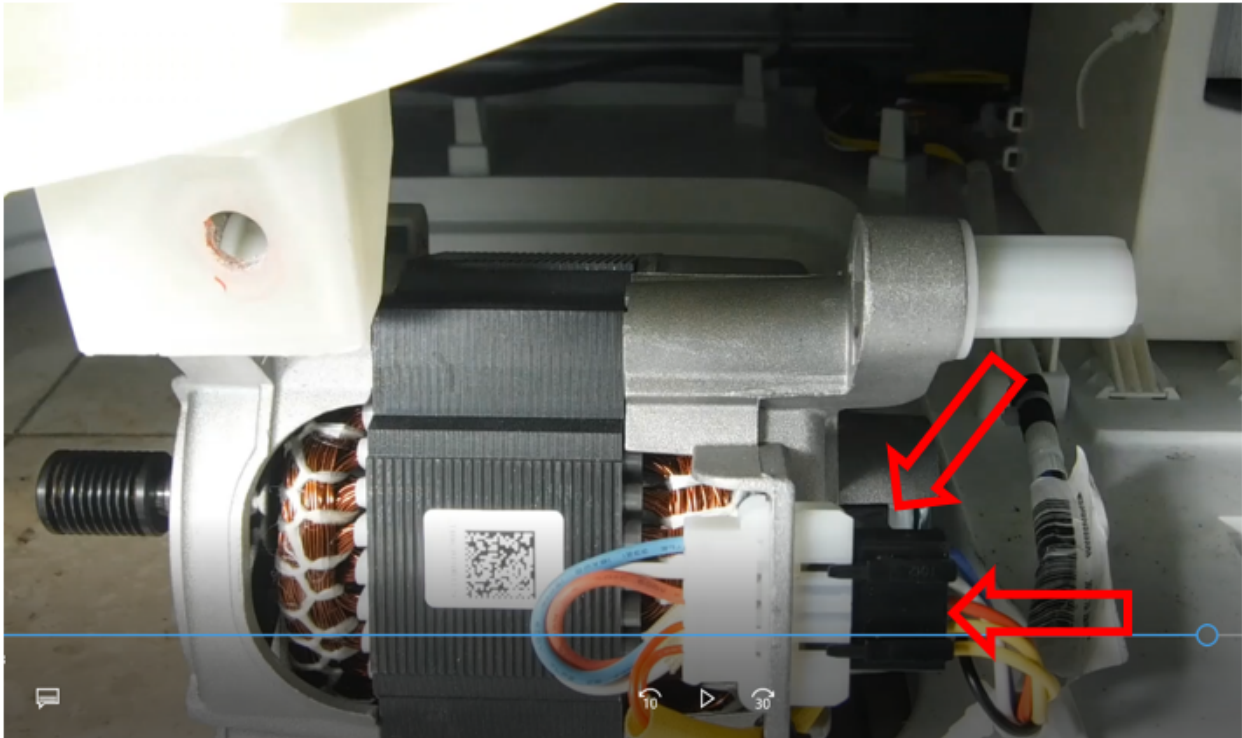


Step3. Remove the Motor

Remove the 1/2" bolt that secures the motor to the tub.



Once the Motor is loose, pull it towards yourself to slide it off the tub. Lay the Motor on the floor space inside the opening of the base of the washer. Remove the Harness and Ground connector from the Motor.



From the front, Pull counterweight forward and reach in to remove motor.



Step4. Replace The Motor

Replace the Motor, re assemble the washer, and test.

Nidec
NIDEC MOTOR CORPORATION
00N32900301 REV C
MIDEA POPLAR 3
MADE IN CHINA (C1)
DATE CODE 83590022

RU[®] US
C E97751

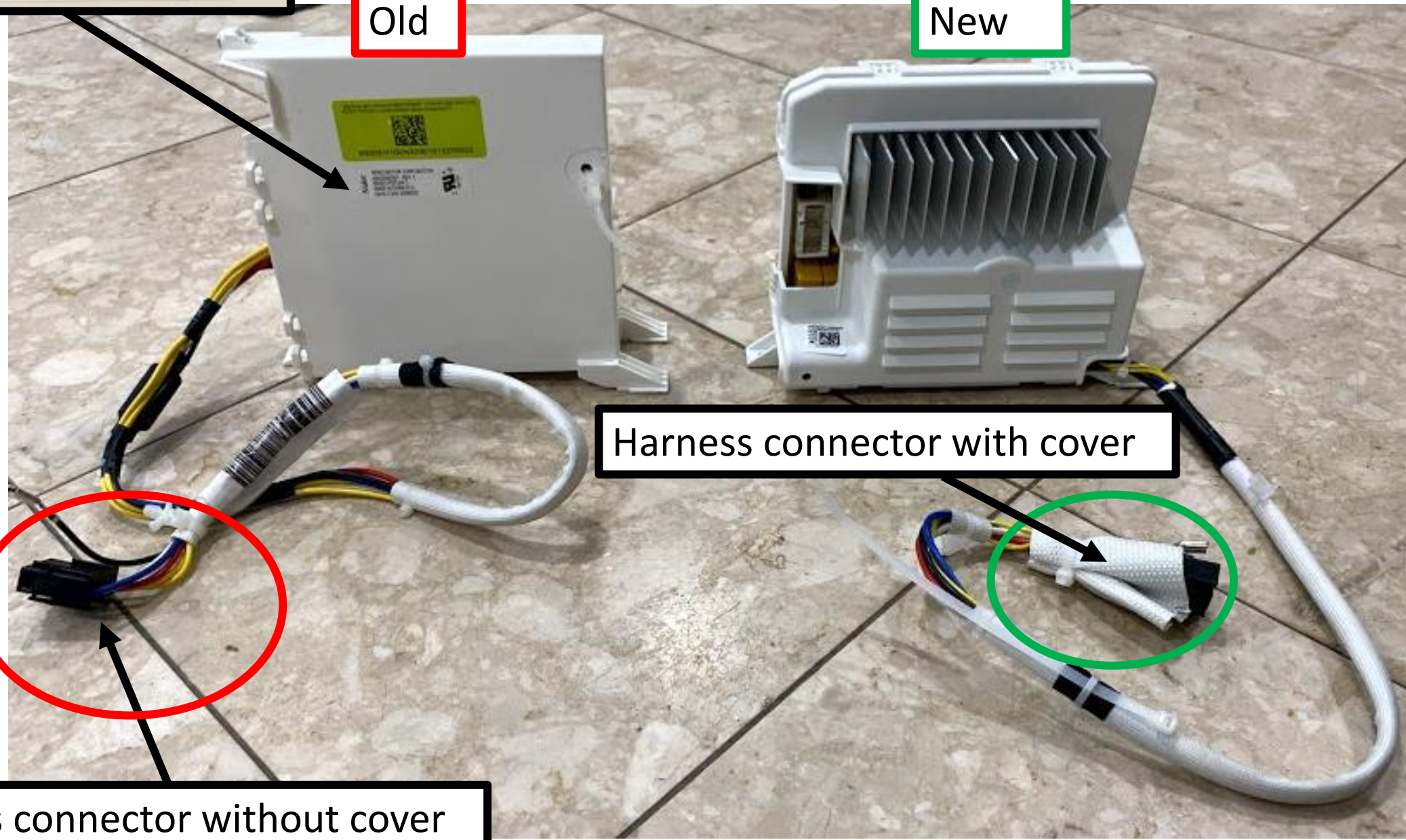
Old

New

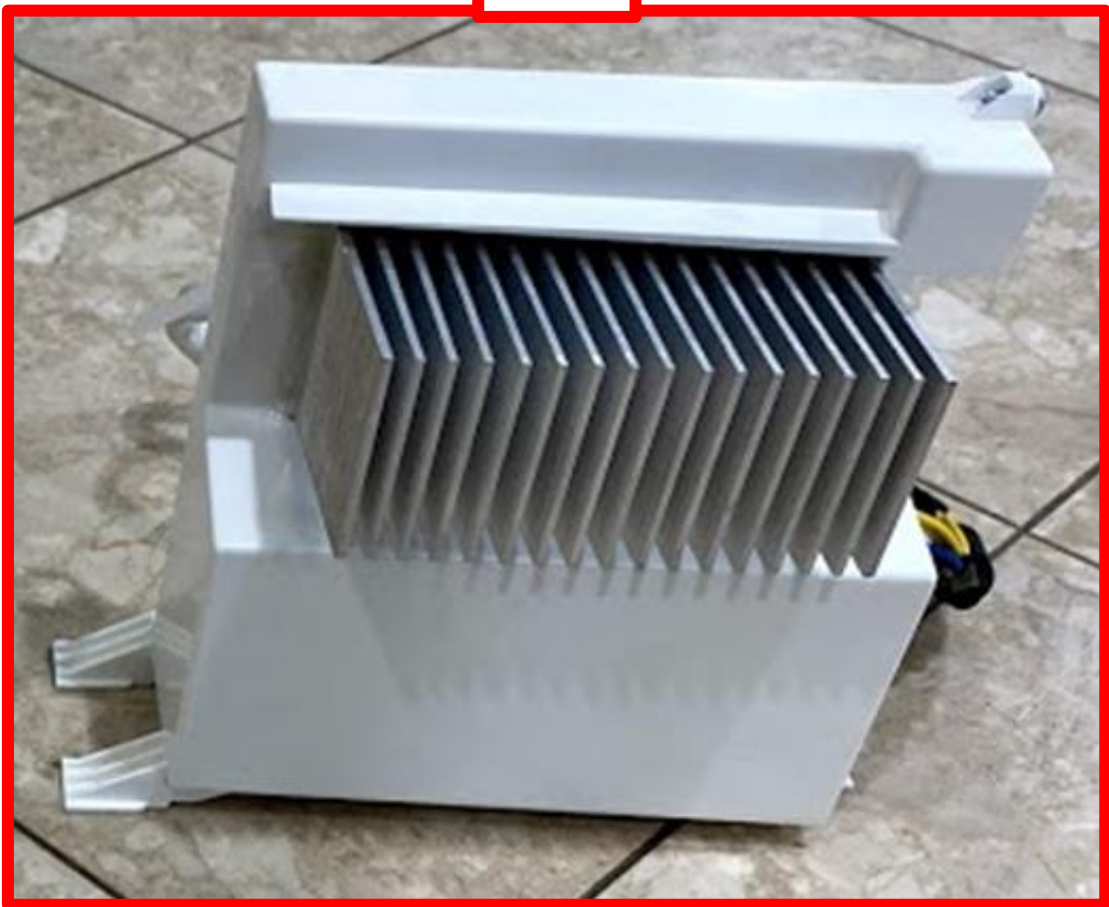
Harness connector with cover



Harness connector without cover



Old



New

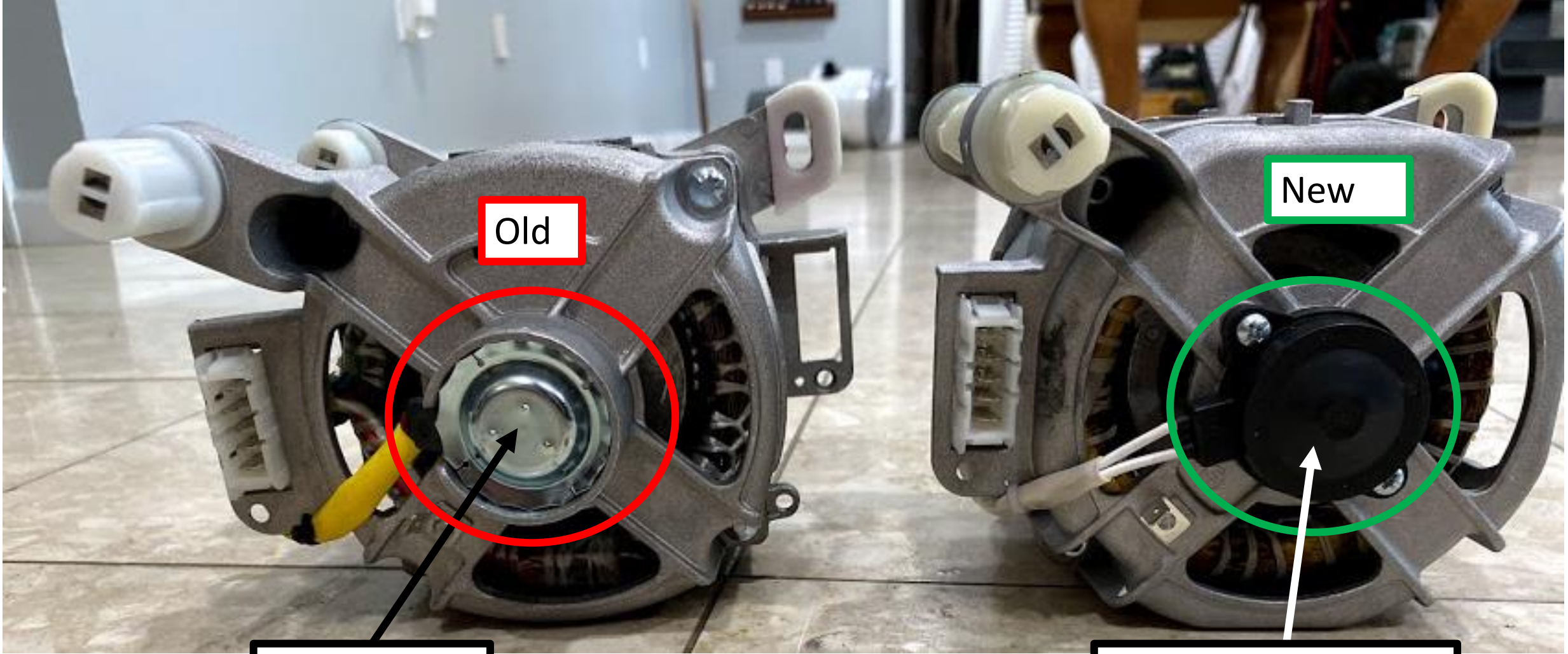


Old



New





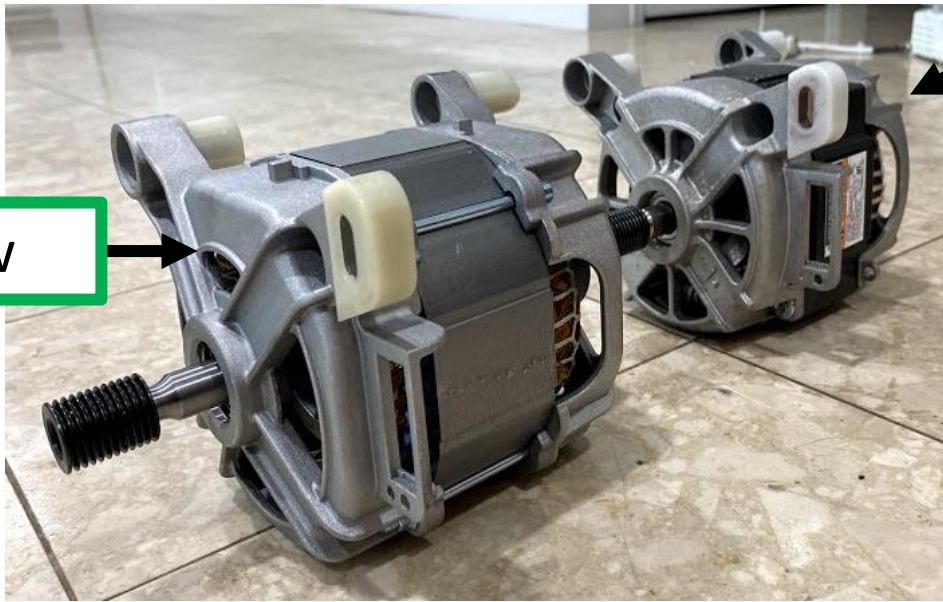
Old

New

Metal cover

Black plastic cover

New



Old

New



Old

Welling

New Inverter labeled from Welling

Welling

| | | | | | |
|-------------------|--------------------------------|--------------|-------------|-----|-----|
| N.Wt(kg) | | 0 | Model | | |
| G.Wt(kg) | | 0 | Customer | | 3FM |
| Packing Size (mm) | | 550*340*200 | PO No | | |
| No. | Description | Factory Code | Part Number | Qty | |
| 1 | Three phase asynchronous motor | 190604080112 | | 1 | |

812 A6758601 01SD91 0065

812 A6758601 01SD91 0065

New motor labeled from Welling